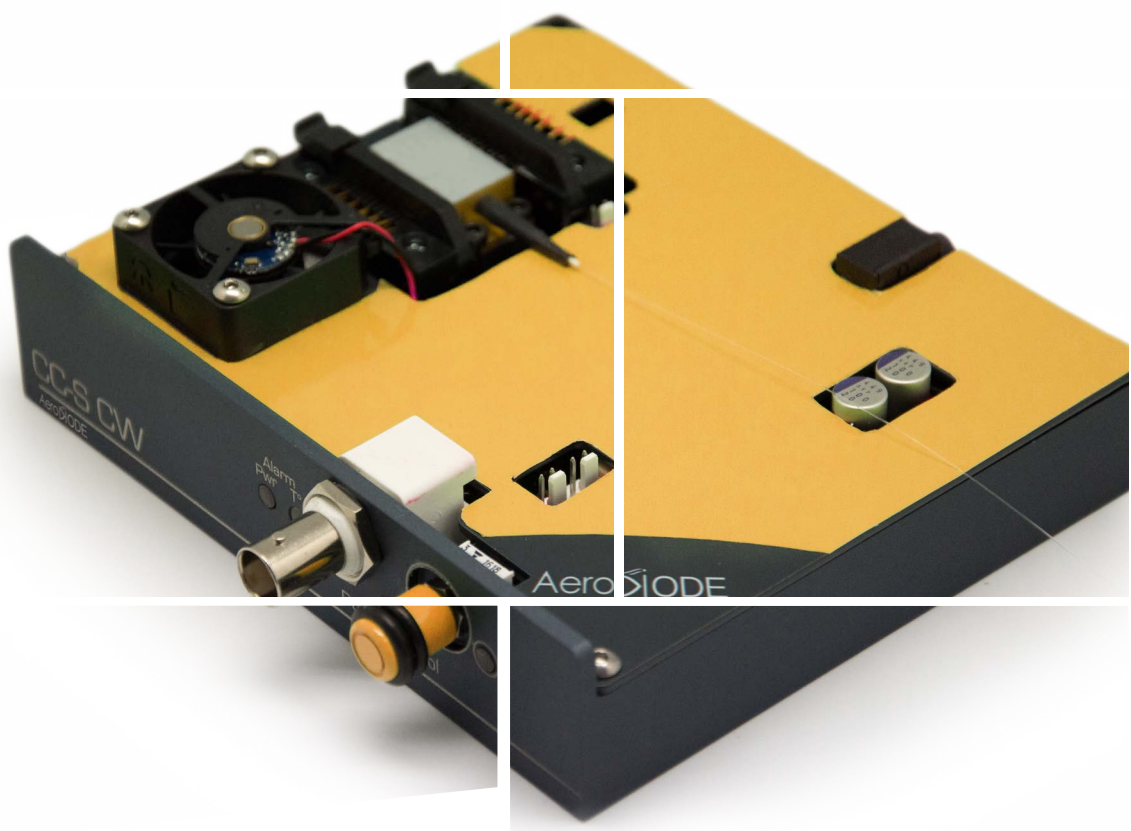


CCS-CW

To drive Single-Mode butterfly laser diodes in CW regime



Aerodiode

CW laser diode drivers

4 versions : Standard, HP2 & 2 low-noise models

Current source with TEC controller, pre-configured mounting sockets, USB interface, Genuine User Interface and several libraries (Labview/Hexa/Python (linux)/DLLs etc.)



These fully integrated laser diode control and mounting modules are designed for precision control of single mode laser diode modules in research labs and for product integration. Two ultra-low noise versions are offered as a new precision solution with new performances.



Multiple layers of laser diode protection ensure that your device is protected at all times. The drivers can be delivered with or without butterfly mounting sockets. They are compatible with butterfly laser diodes and many other form-factors (TO, TOSA, VCSEL etc.)

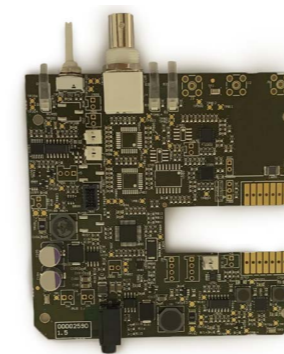
Features :

- Output current up to 1800 mA (four versions)
- Adjustable compliance voltage (see the specifications and other product called TDLAS)
- Internal modulation over a CW setpoint with sin/sqr/triang adjustable modulation (2 versions)
- External modulation over a CW setpoint with adjustable transfer function 0-20mA/V (2 versions)
- Temperature stability : down to 1mK
- Available as electronics boards for cost saving OEM solution (Minimum Order Quantity applies)
- See the RIN noise curve for the impressive performances of the (ultra) low noise version
- USB, manual & analog (0-5 V) signal peak power adjustment
- Several Libraries for system integration : Labview, DLLs, Hexa, Python (windows or Linux compatible)
- Smart control (USB interface to drive simultaneously several modules from AeroDIODE laser electronics series) - The GUI is supplied with each product.
- OPTIONS : Touch screen, Optical table mounting set etc.

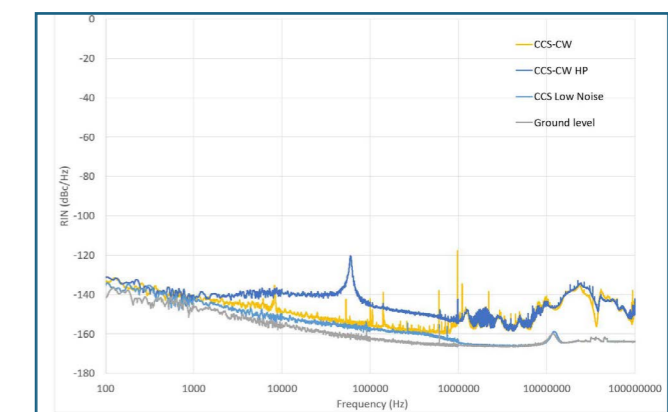


Technical Specifications :

Product Version	CCS-CW models		Low Noise Models	
	CCS-CW-std	New ! CCS-CW-HP2 (High power)	TDLAS (for modulation)	CCS - Low Noise (Ultra-low noise version)
Output Current	0 - 800 mA	0 - 1800 mA	0 - 1500 mA (Contact us for special 2500 mA version)	
Set point resolution (@ 100 mA)	25 μ A			
Current Modulation	External only : 0-5V		Internal : sin/sqr/triang External : 0-20mA/V (adjustable);	
Modulation bandwidth	100 Hz		100 kHz (300 kHz typical)	200 Hz
Output compliance voltage	0 - 4.8 V	0 - 24 V	0 - 5 V	
Laser diode T° regulation	15 - 50°C	0 - 90°C		
Temperature stability (typ)	<10 mK	<1 mK		
TEC current/voltage	\pm 1.5 A/3.8 V		\pm 3 A/4.6 V	
BFM (Back Facet Monitor) / External photodiode monitoring	BFM output connector only		Yes/Yes (variable gain)	
Interface/Compatibility/Libraries	USB / Hexa, DLLs, LabVIEW, Python (Linux)			
Power Supply	12 V (220 V/110 V adapt. incl)		24V (adapt incl)	
Dimensions (mm)	130*126.8*32.5		170*126.8*32.5	



Also available at board level for OEM integration (MOQ applies)



Ultra-low noise RIN performances of CCS-Low noise close to ground level with no noise peak



AeroDIODE

Institut d'optique d'Aquitaine
Rue François Mitterrand
33400 Talence - France

Ph. +33 (0)6 27 69 41 52

www.aerodiode.com