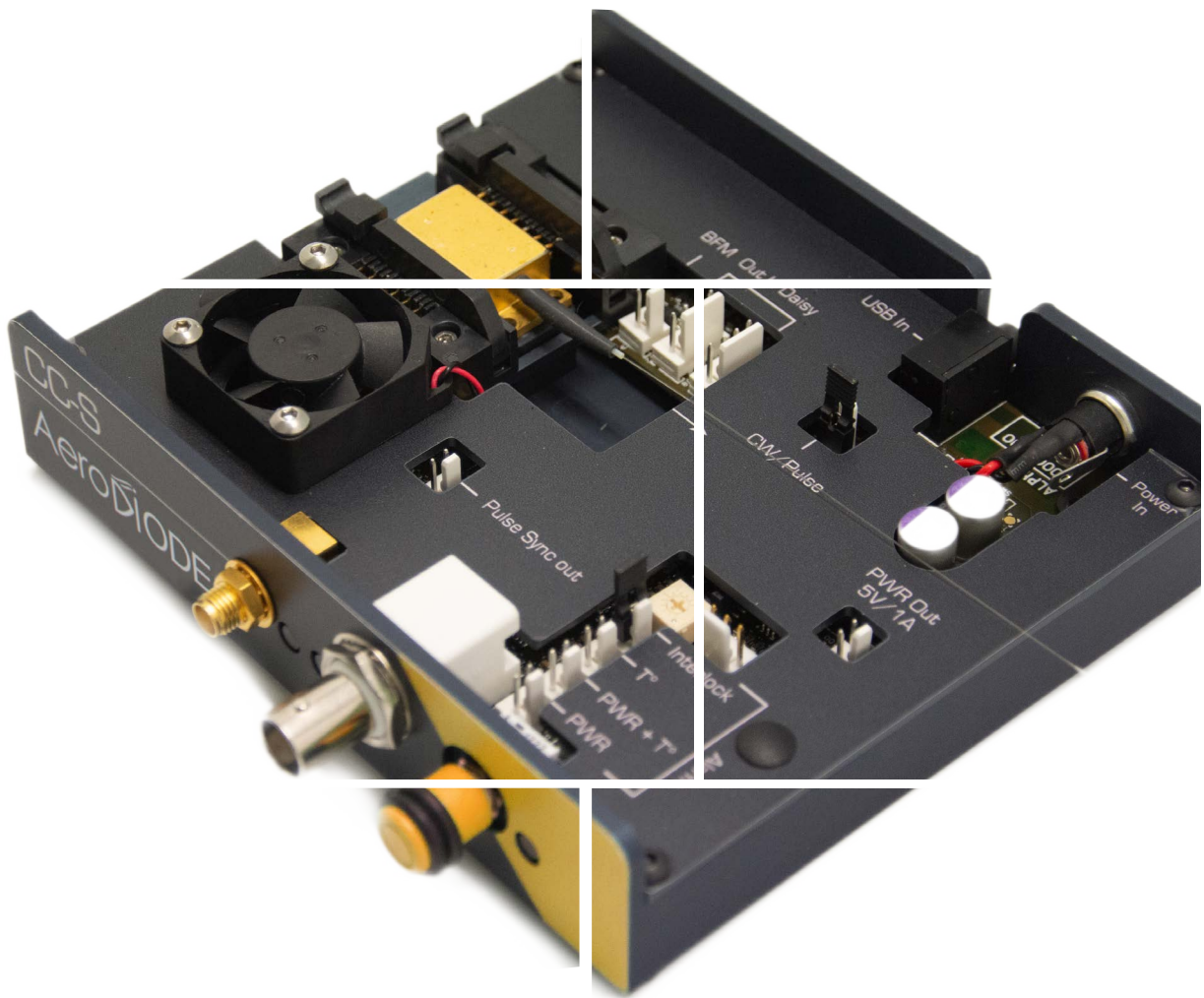


980 nm laser diode & Turn-key solutions



Aero **Di**ODE

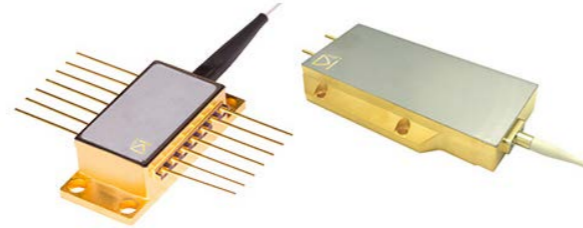
980 nm laser diode

Choose your own fiber-coupled laser diode + turn-key Driver solution

Standard singlemode or multimode laser diodes are sourced from the most reliable manufacturers and offered as stock items or associated with a CW or pulsed turn-key laser diode driver.

1st

Choose your laser diode :



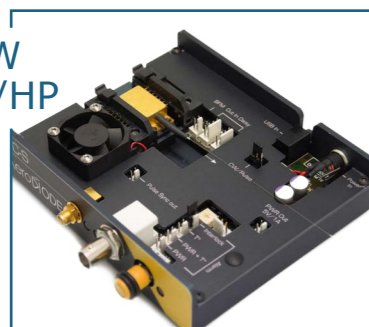
Diode type	Power (CW)	Power (Pulse)	Technology	Wavelength (nm)	Fiber	Emission Bandwidth (typ)	Package (mm)
1	300 mW	1000 mW	Butterfly single mode	981±0.5nm	PM 980	~0.1 nm	14 pin Butterfly-type 1
2	600 mW	1200 mW					
3	10 W	10 W	Multimode single emitter	980 ± 10 nm	Multimode 106 µm NA=0.22	~5 nm	38.5*45*10
4	30 W	50 W	Multimode multi emitter				
5	80 W	100 W					
6	150 W	150 W					

3rd

Choose your product form factor : OPEN-FRAME or INTEGRATED

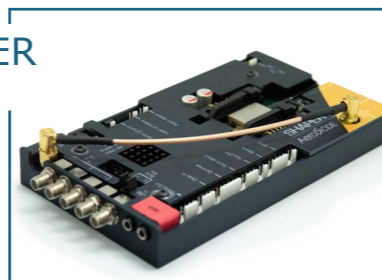
OPEN-FRAME VERSIONS :

CCS-CW
CCS-std/HP



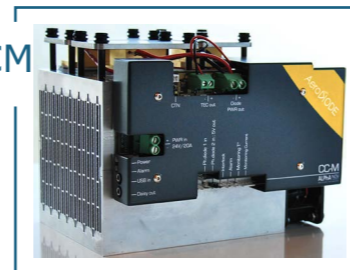
➤ Open-frame driver for CW, std and HP electronics Boards for single mode diodes

SHAPER



➤ Open-frame driver for «Shaper» electronic Board and single mode diodes

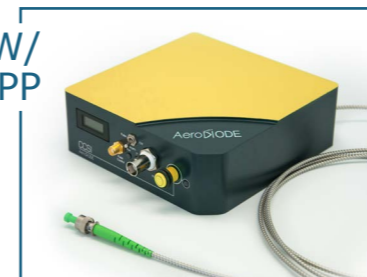
CCM



➤ «CCM» Open-frame driver for Multimode diodes

INTEGRATED VERSIONS :

CCSI-CW/
std/HP/HPP



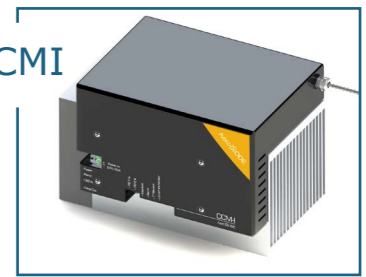
➤ Integrated version for CW, std and HP electronics Boards

SHAPER-I



➤ Integrated version for Shaper electronics Board

CCMI



➤ «CCMI» Open driver for Multimode diodes

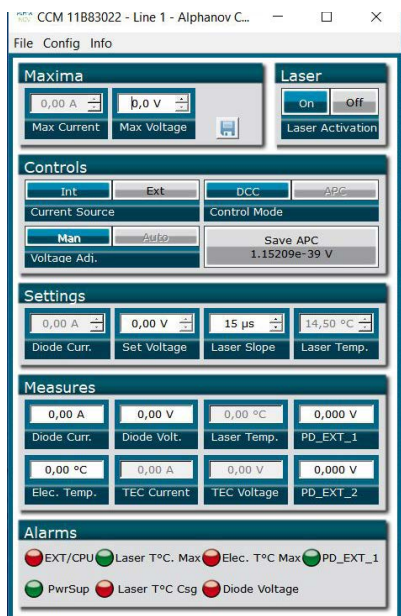
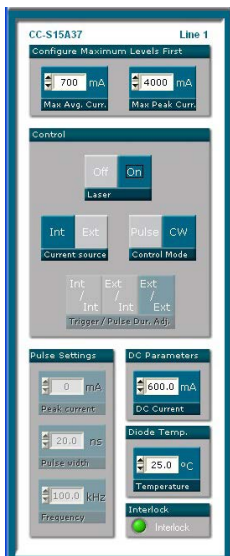
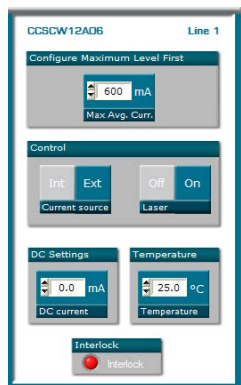
2nd

Choose your Driver performance :

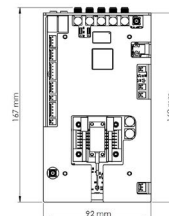
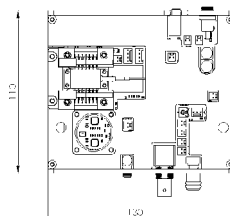
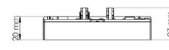
	808 nm Laser Diode version	LASER DRIVER VERSION :			
		CW Driver (for singlemode diodes : «CCS-CW» is the open driver and CCSI-CW is the integrated version)	Pulse & CW Driver (from 1 ns to CW : «CCS» is the open driver and CCSI is the integrated version)	User design pulse shape Driver («SHAPER» open driver from 0.5 ns to 8 µs)	Multimode diode Driver (High power driver for 10 to 150 W diodes : CCM is the open version, CCMI is the integrated version)
Output Power - CW / Pulse (Typical values)	1- single mode 300 mW	300 mW / No	300 mW / 1000 mW	No / 1000 mW	Not compatible
	2- single mode 600 mW	600 mW / No	600 mW / 1200 mW	No / 1200 mW	
	3-6: Multimode : 10 W/30 W/ 80 W or 150 W	Not compatible			10 W / 10 W 30 W / 30 W 80 W / 80 W 150 W / 150 W
User design Pulse shape		No	No (On-Off only)	Yes	No
Laser diode T°		15 - 50 °C			15 - 40 °C
Pulse duration (Ext trigger)			0.5 ns - CW	0.5 ns - 8 µs	10 µs - CW
Pulse duration (Internal pulse generator)			0.5 ns - 500 ns		No
Typ rise/fall time ; Min Pulse duration	Any		3 (ns/A) ; 1.5 ns	< 1ns/A ; 1.5 ns	few µsec
Internal rep rate adjustment			1 Hz - 4 MHz (250 MHz optional)	1 Hz - 20 MHz	No
Temporal Jitter			< 25 ps	< 2 ns	
Adj. CW offset (pulse regime)			Optional	No	Yes (external mode)
Interface/GUI/libraries		USB - Windows 7 / 10 - DLLs - Hexa / Linux - Labview - Python			

Technical Specifications

GUI (examples)

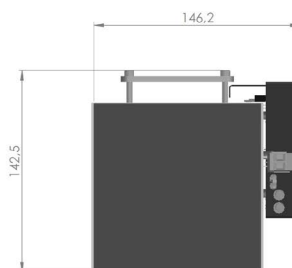


Mechanical (examples) :

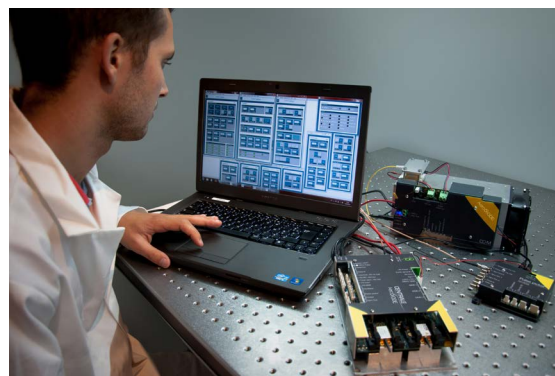


CW & Pulsed

SHAPER



CCM (for Multimode diodes)



Classification :

Name	980LD :
Diode type	1: 300 mW Butterfly singlemode 2: 600 mW Butterfly singlemode 3: 10 W multimode 4: 30 W multimode 5: 80 W multimode 6: 150 W multimode
Driver Electronics :	1: CCS-CW (open driver for CW only) 2: CCS-std (Standard Pulse and CW Driver) 3: SHAPER (pulse only with user design pulse shape) 4: CCM (for multimode diodes)
Form Factor	1: Open 2: Integrated

Ordering information :

