

1310 nm laser diode - DFB

Model 3 : >100 mW / singlemode fiber / 14 pin Butterfly with isolator / SMF or PMF

Reference: 1310LD-3-0-0

Technology : DFB*

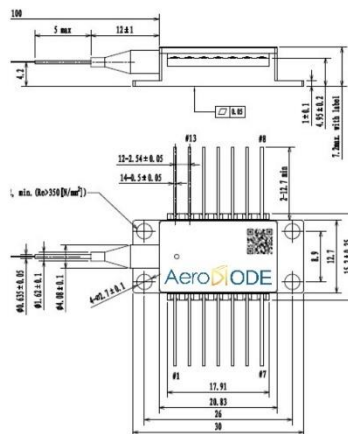
SPECIFICATIONS	Unit	Min	Typ	Maximum
Output Power (CW mode)	mW	100		
Output Power (Pulse mode)	mW		150	
Center Wavelength (CW)**	nm	1305	1310**	1315
Isolator (Note : contact us for special version with no isolator or double stage isolator)	dB		25	
Spectral Width (FWHM)	KHz		100	200
Threshold Current	mA		15	30
Operating Current	mA		325	500
Operation Voltage	V		1.8	2.0
Wavelength shift w Temperature	nm/°C		0.08	
Wavelength shift w Current	nm/mA		0.003	
Side mode suppression ratio	dB	35	50	
Internal Photodiode Responsivity	mA/W	5		
Internal Photodiode Dark Current	nA			500
TEC current (-5/60°C)	A			1.5
TEC Voltage (-5/60°C)	V			2.0
Internal thermistor (25°C)	kΩ	9.5	10	10.5
Fiber type	SMF28-e/ultra or equivalent (PM version : PM1300 or eq.)			
Coating diameter	µm		900	
Fiber bend radius	mm			30
Storage case temperature	°C	-40 (abs min)		70 (abs max)
Case operating temperature	°C	-20		60
Lead soldering temperature	°C		260	300
Laser diode reverse voltage	V			15
Butterfly pin configuration***	Type-1***			
Pigtail termination	FC/APC connector			
Polarization state (PM version)	Aligned to the slow axis			

*: See our tutorial : [fiber coupled laser diode](#)

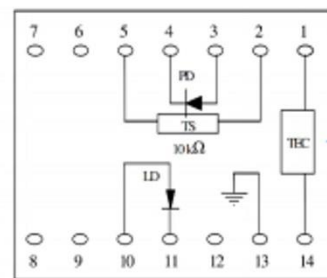
** : Possibility to specify a precise wavelength – contact us

*** : Possibility to request another butterfly pin configuration: Type-2, Type-2 bias-T, Type 2 bias-T anode grounded...

Form factor & laser diode pin configuration (standard 14-pin Butterfly Type-1)*** :



Dimensions are in mm



Totally floating pin-out

